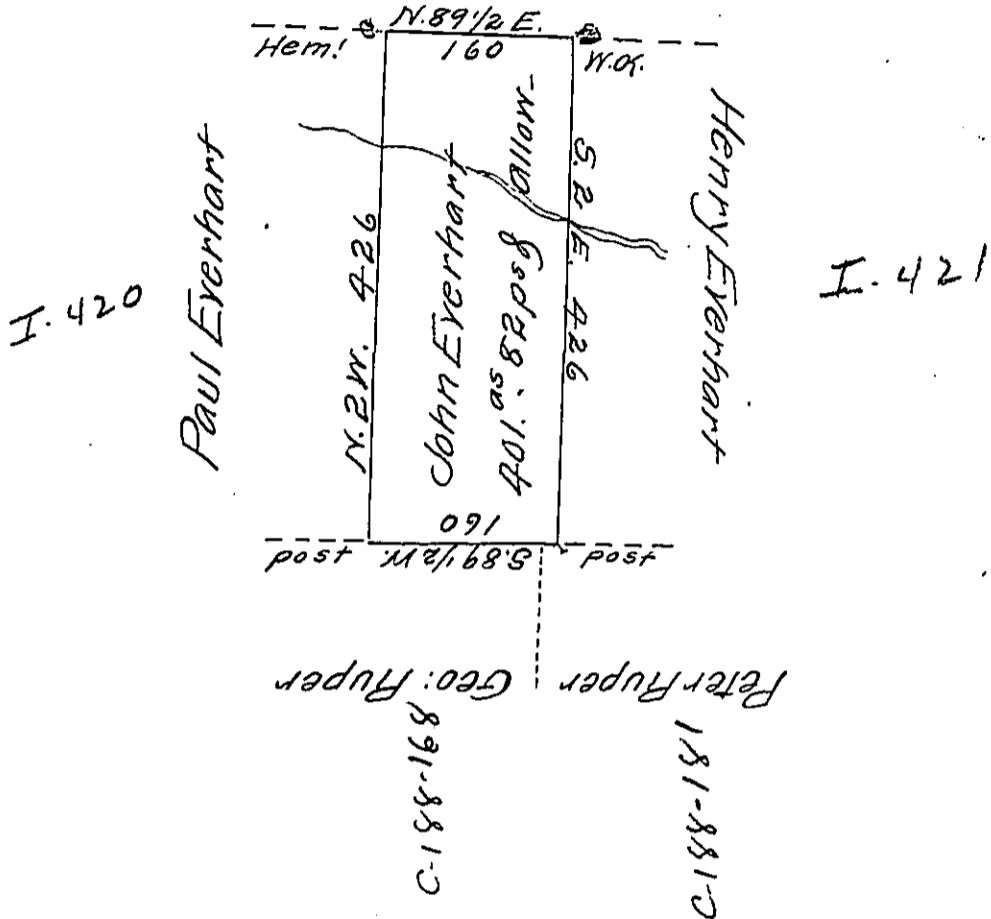


C-170-187

Henry Reeder



A Draught of a tract of land called \_\_\_\_\_ Situate in the County of Luzerne, adjoining Paul Everhart & others, Surveyed the 19<sup>th</sup> day of Novem<sup>r</sup>. 1792 for John Everhart in pursuance of a Warrant bearing date the 3<sup>d</sup> day of April 1792, Containing Four hundred one Acres & Eighty two perches & the usual allowance of Six p Cent for roads &c

Anty Crothers D.S.

To Dan' Brodhead Esq<sup>r</sup> }  
 Surveyor General

IN TESTIMONY that the above is a copy of the original remaining on file in the Department of Internal Affairs of Pennsylvania, made conformably to an Act of Assembly approved the 16th day of February, 1833, I have hereunto set my Hand and caused the Seal of said Department to be affixed at Harrisburg, this Sixth day of June 1911

*Henry Honck*  
 Secretary of Internal Affairs.